

Daily Weather Update

Coastal Area Around The Sri Lanka

Information Fusion Center-Colombo



Information Fusion Center
Colombo
Sri Lanka

Date 2026.01.08



WEATHER FORECAST FOR SEA AREAS AROUND THE ISLAND DURING NEXT 24 HOURS

Issued at 05.30 a.m. on 08 January 2026



**DEPARTMENT OF METEOROLOGY
SRI LANKA**

CONDITION OF THE RAIN

Showers or thundershowers will occur at several places in the sea areas off the coast extending from Mannar to Galle via Kankasanthurai, Trincomalee and Pottuvil. Showers or thundershowers may occur at several places in the other sea areas around the island in the evening or night

WINDS

Winds will be north-easterly and wind speed will be (35-45) kmph.
Wind speed can increase up to (60-70) kmph at times in the sea areas around the island.

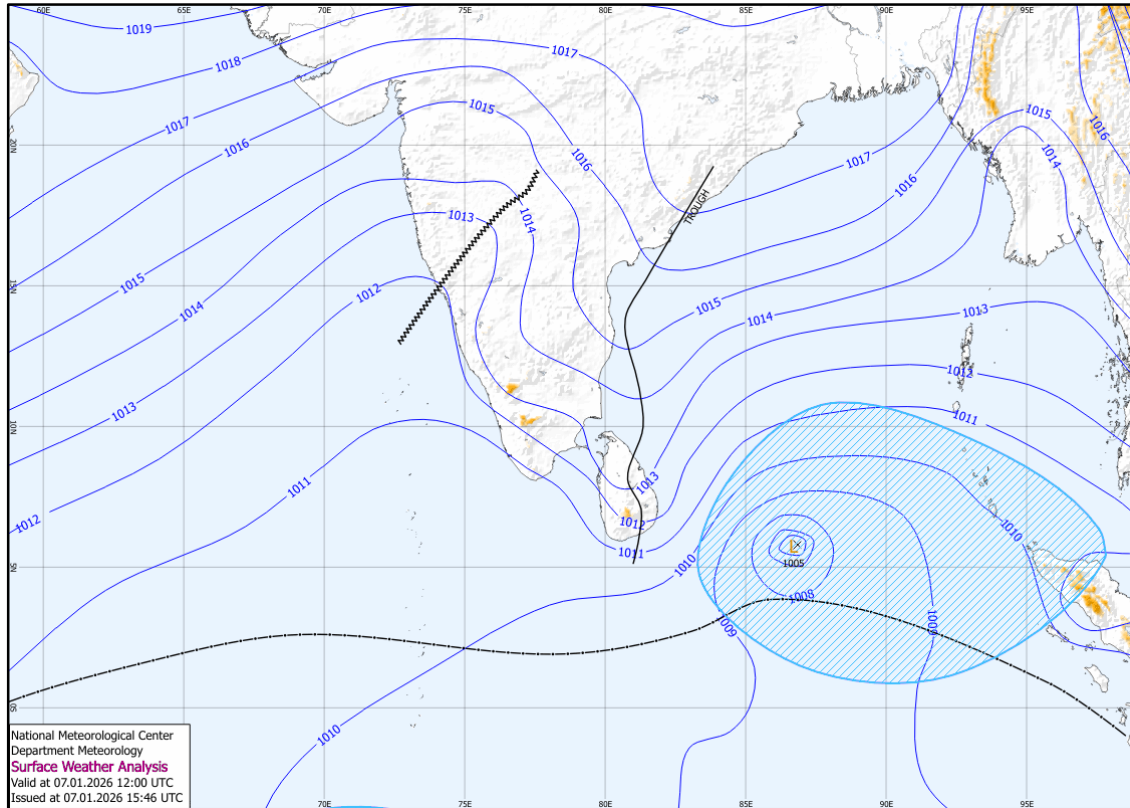
STATE OF SEA

The sea areas around the island will be rough to very rough at times.

The wave height may increase (about 2.5 – 3.5 m) in the sea areas off the coast extending from Kankasanthurai to Hambantota via Trincomalee and Pottuvil (this is not for land area).

Temporarily strong gusty winds and very rough seas can be expected during thundershowers.

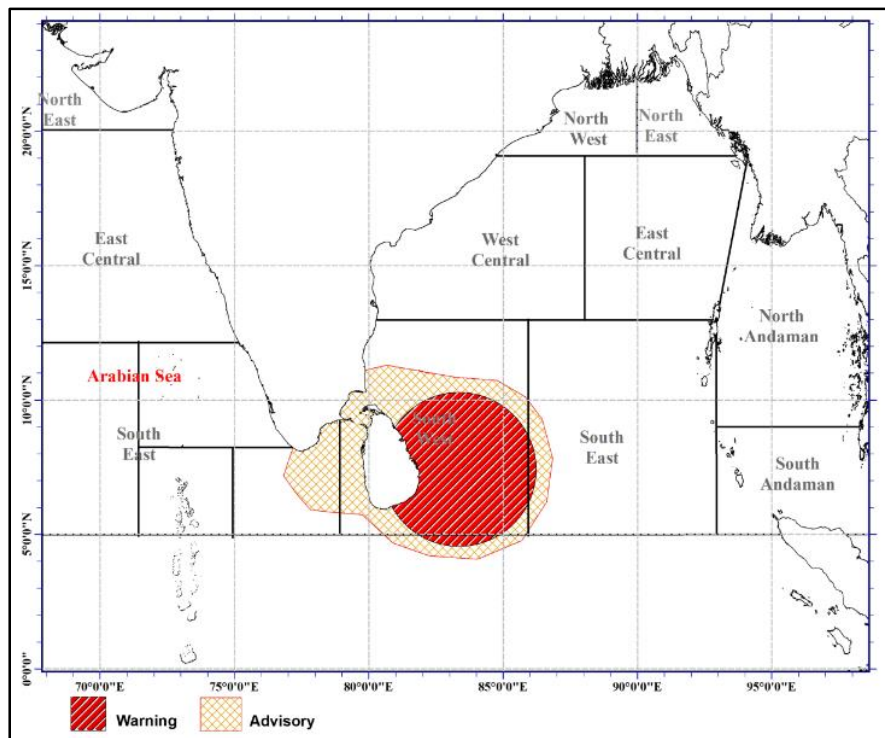
SURFACE ANALYSIS CHART



This analysis charts show the surface pressure pattern over Sri Lanka and the surrounding area. They display isobars (lines of equal pressure) and indicate areas of high (H) and low pressure (L) along with their central pressure value. Isobars are represented by solid blue lines, spaced every 1 hPa. High pressure is usually associated with mainly dry, settled weather with light winds, while low pressure is normally associated with unsettled weather, which is often wet and windy. The lower the pressure, generally the stronger the winds and the heavier the rain.

The map shows Coordinated Universal Time (UTC) and the local time is UTC+5.30.

ADVERSARY

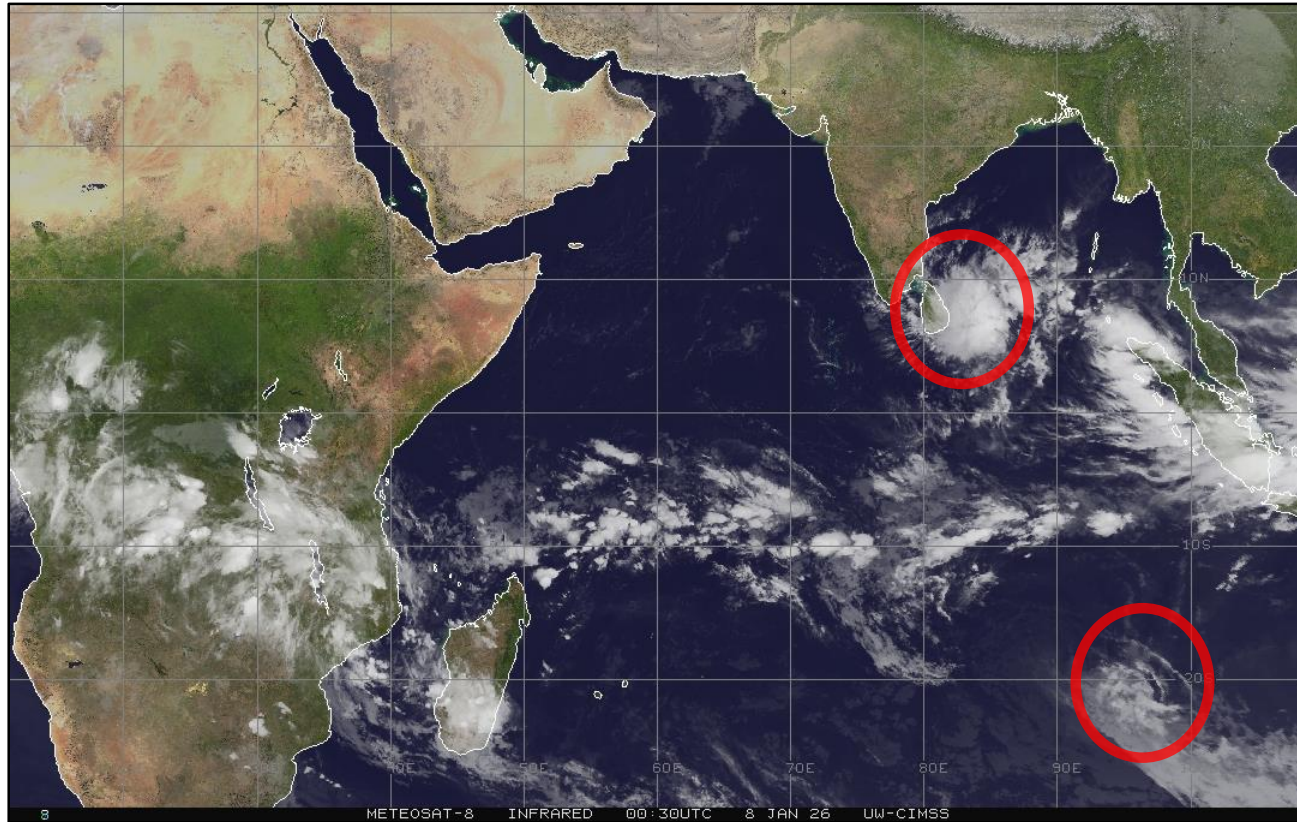


The depression over the Bay of Bengal, located to the southeast of Sri Lanka, was centered near latitude 5.0°N and longitude 86.8°E, about 570 km southeast of Pottuvil, at 5:30 p.m. on 07 Jan 25. It is expected to move west-northwestwards and towards the eastern coast of the island during the next 36 hours. This system is likely to intensify further into a deep depression during the next 12 hours. Hence, showery conditions over the island, particularly in the Northern, North-Central, Eastern, Uva and Central provinces, are expected to enhance from 08 Jan 25.

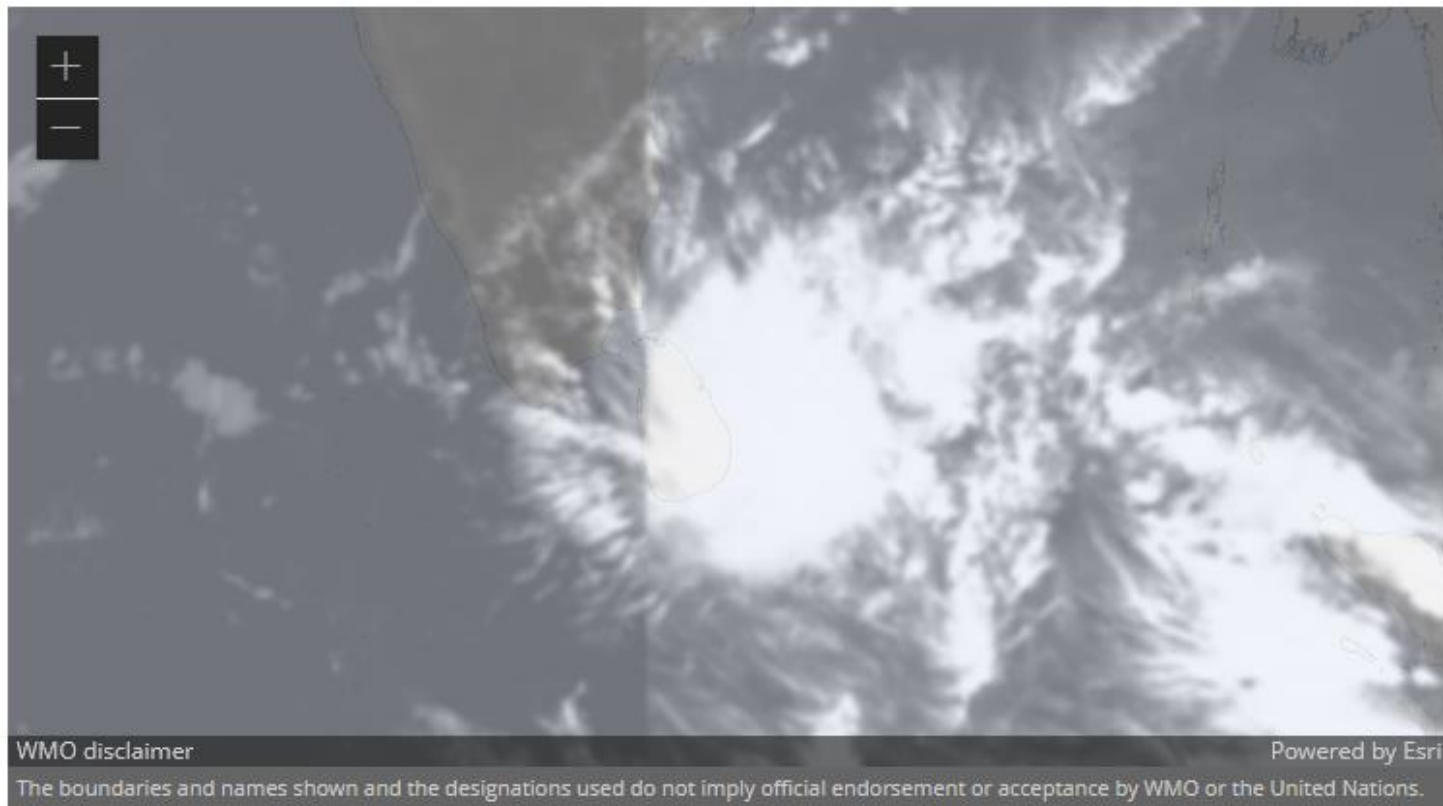
Advisory for depression over Southeast Bay of Bengal.

Issued at 10.00 p.m. on 07 January 2026 for the period until 10.00 p.m. 08 January 2026.

SATELLITE IMAGE-1



SATELLITE IMAGE-2





**Information Fusion Center
Colombo
Sri Lanka**

THANK YOU

The Officer Incharge
Information Fusion Centre - Colombo
Naval Headquarters, Colombo, Sri Lanka
+94 11 719 480 6
+94 74 120 4829
ifc@navy.lk
ifc.cbo@gmail.com